

Datalogger Control Panel

USER GUIDE

Release 1.0

MAIN WINDOW

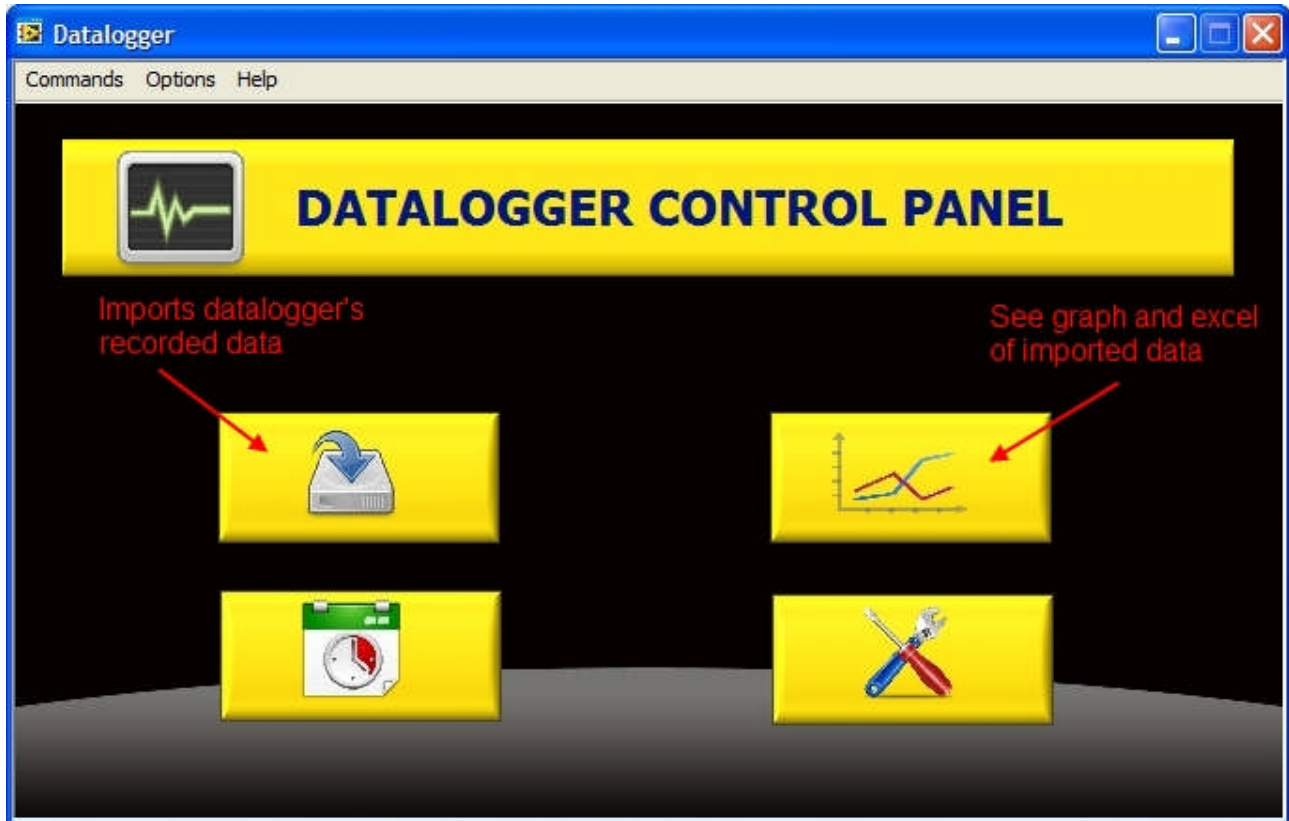


Fig. 1 – Main Window

From here it is possible to:

1. Import datalogger's recorded data
2. See graph and excel files of imported data
3. Set datalogger date and time (password protected)
4. Open advanced options and operations (password protected)

NOTE:

When operating with a connected datalogger, remember to select the proper the COM port (menu Options → COM Port)

IMPORT DATALOGGER DATA

Datalogger's stored records and data can be downloaded to PC in many ways.

1. Through a USB key
2. Through a USB cable connected to PC
3. Through a smartphone by Bluetooth radio link

Once data are imported to PC, they are stored in a archive file.

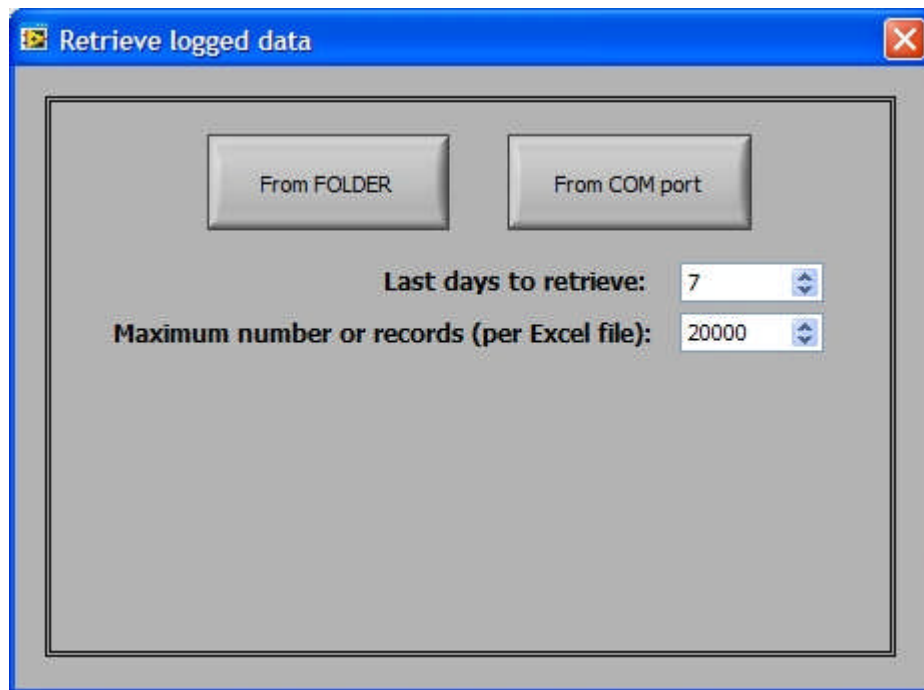


Fig. 2 – Import datalogger's data

From FOLDER: Select the folder where datalogger files can be found

From COM Port: Click here if datalogger is connected by USB cable to PC or by Bluetooth radio link

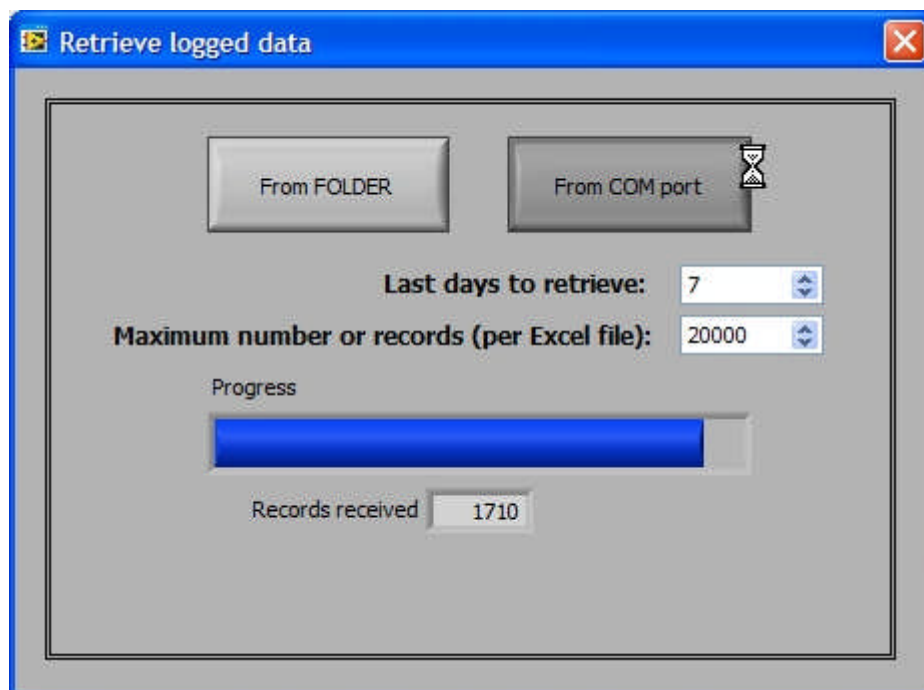


Fig. 3 – Import datalogger's data, operation in progress

At the end of a successful import process, a window will pop up, showing the statistics about last imported data:

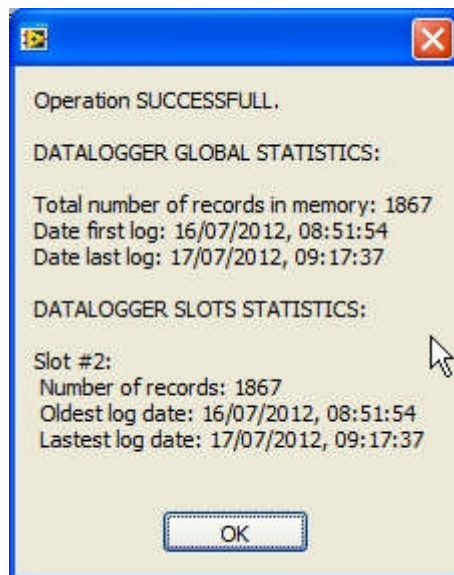


Fig. 4 – Statistic about last imported data

GRAPHS

Click the archive to see the content.

Double click on a slot to see the plot of the data contained in the selected slot.

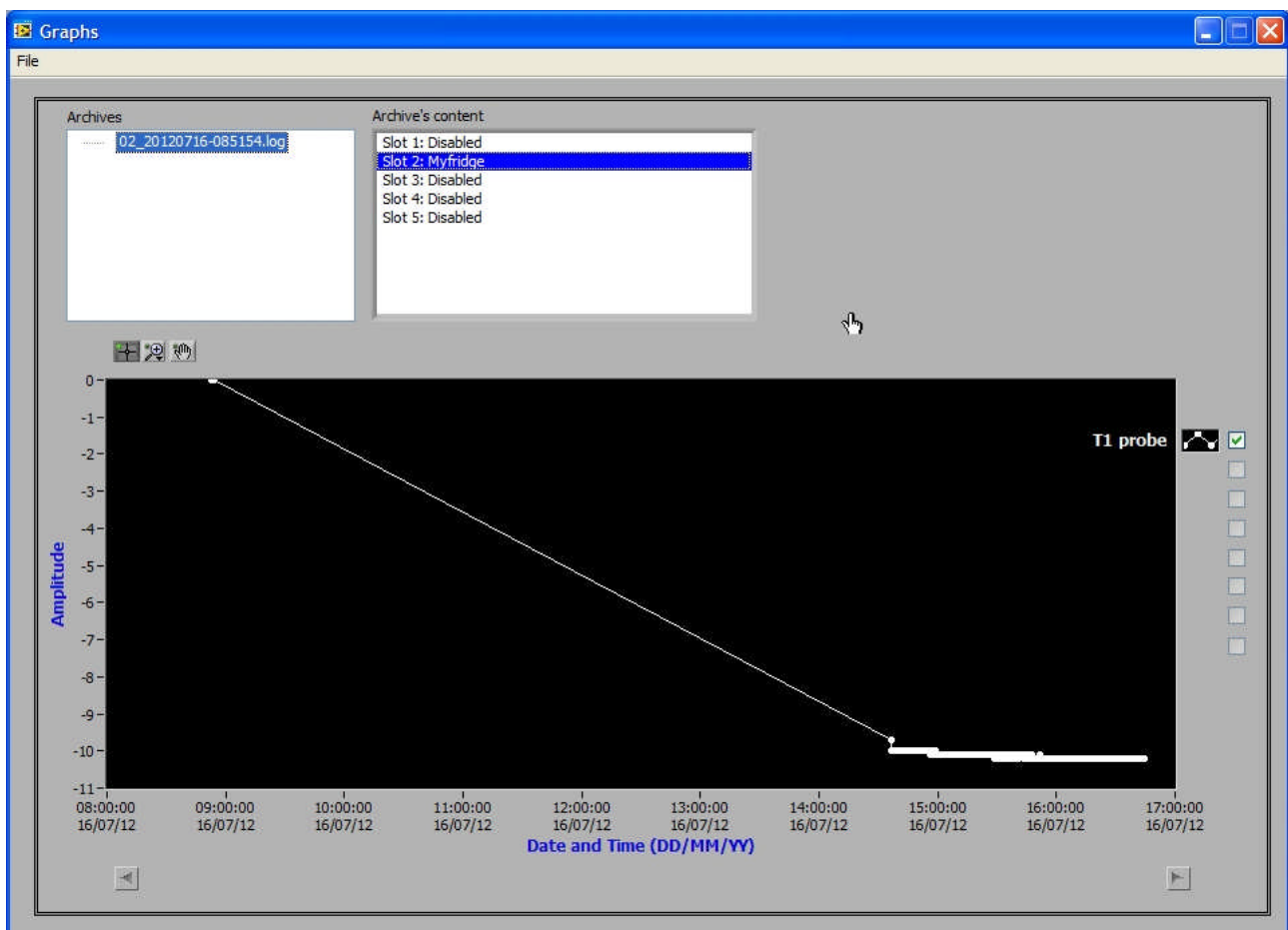


Fig. 5 – Graphs for an archive's slot