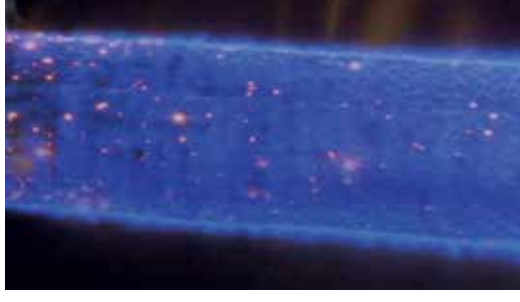


FASCO

PRE-MIX BLOWERS



A Regal Brand

REGAL



ABOUT FASCO

For over 100 years, Fasco has delivered a complete line of custom fractional horsepower motor and blower solutions. These products power thousands of everyday household and commercial applications. From our start as one manufacturing plant in Rochester, NY in 1911 to having technical global expertise with locations in China, Thailand, Europe and North America. Fasco continues to be an industry leader in this ever-changing marketplace that requires energy efficient air moving solutions.

Through our team of forward-thinking engineers and technicians, Fasco will continue to provide innovative custom solutions and a world class customer experience.

Solutions.
Selection.
Support



A PROPOSITO DI FASCO

A proposito di FASCO Da oltre 100 anni FASCO fornisce una linea completa di soluzioni personalizzate di motori a potenza frazionaria e ventilatori. Questi prodotti alimentano quotidianamente migliaia di applicazioni domestiche e commerciali. Dallo stabilimento di Rochester NY USA, fondato nel 1911, siamo arrivati ad avere competenze tecniche globali con siti produttivi in Cina, Tailandia, Europa e Nord America.

FASCO continua ad essere una delle industrie leader in questo settore di mercato che è in continuo mutamento e che richiede soluzioni ad alta efficienza energetica per il movimento dell'aria. Con il nostro team di ingegneri e tecnici all'avanguardia, FASCO continuerà a fornire soluzioni personalizzate innovative e un alto livello di soddisfazione del cliente.

Soluzioni
Assortimento
Supporto



ÜBER FASCO

Seit über 100 Jahren liefert Fasco kundenspezifische Motoren und Gebläselösungen. Diese Produkte treiben tausende Haushalts- und Gewerbeanwendungen an. Seit unserem Start mit einer Produktionsstätte in Rochester, NY im Jahre 1911 bis heute, mit globaler Technologiekompetenz in China, Thailand, Europa und Nordamerika bleibt Fasco ein Vorreiter in einem sich verändernden Markt, der energieeffiziente Lösungen in der Lüftungstechnik fordert. Durch unser Team vorausdenkender Ingenieure und Techniker wird Fasco auch weiterhin innovative kundenspezifische Lösungen für erstklassige Kundenzufriedenheit bieten.

Lösungen,
Auswahl,
Beratung



A PROPOS DE FASCO

Depuis plus de 100 ans, Fasco a développé une gamme complète de moteurs et de ventilateurs. Ces produits alimentent des milliers d'applications résidentielles et commerciales. Depuis l'usine d'assemblage de nos débuts en 1911 à Rochester, NY jusqu'à nos centres d'expertise techniques implantés en Chine, Thaïlande, Europe et Amérique du Nord, Fasco continue d'être un leader industriel dans ce marché en perpétuel mouvement afin d'apporter les solutions les plus efficaces au besoin de déplacement d'air.

A travers notre équipe d'ingénieurs et de techniciens tournée vers le futur, Fasco va continuer à proposer des solutions sur mesure innovantes et un niveau de satisfaction client de classe mondiale.

Solutions.
Sélection.
Assistance



ACERCA DE FASCO

Por mas de 100 años, Fasco a entregado una linea completa de motores fraccionales de caballo de fuerza asi como soluciones en sopladores. Estos productos potencian a miles de hogares y aplicaciones comerciales todos los dias. Desde nuestros inicios como una planta manufacturera en Rochester, NY en 1911 hasta tener experiencia tecnica global con locaciones en China, Tailandia, Europa y Norteamerica. Fasco continua siendo un lider en la industria en este siempre cambiante mercado que requiere de soluciones de energia mas eficiente.

A traves de nuestro equipo de ingenieros con vision futura y tecnica, Fasco continuara proporcionando soluciones personalizadas innovadoras y una experiencia con clientes de clase mundial.

Solutions.
Selection.
Support



A Regal Brand

REGAL

PRE-MIX BLOWERS

VENTILATORE PRE-MIX

VORMISCHGEBLÄSE

VENTILATEURS DE PRÉ-MÉLANGE

SOPLADORES PRE-MIX



FEATURES

- > Cast Aluminum blower housing
- > Anti-spark backward curved impeller
- > Sensorless sine drive BLAC motor
- > Sealed Ball Bearings
- > Inlet air bolt pattern option for Honeywell, Dungs or Polidoro
- > Communications -
 - PWM command, 5-43Vdc at 100Hz – 6 kHz
 - Simulated Hall effect output with 2-pulses/Rev. at 12Vdc
 - Programmable up to 36-pulses/Rev.
- > BlakBox™ Technology compatible
- > Serial Communication
- > All Blowers Calibrated at the Factory
- > Potted, replaceable electronics
- > Customer programmable
- > Optional pressure tap
- > Voltage: 120V or 240V 50/60Hz factory set
- > Speed Operation: On/Off, PWM or 0-10V
- > Active PFC For 7.0 and 10.0
- > UL, CSA, CE



TARGETED APPLICATIONS

- > Boilers
- > Water Heaters
- > Food Service



CARATTERISTICHE

- > Coclea in alluminio pressofuso
- > Ventola centrifuga anti-scintilla
- > Motore con azionamento sensorless BLAC
- > Cuscinetti a sfera
- > Bocca con opzione a Honeywell, Dungs o Polidoro
- > Sistemi di controllo
 - PWM, 5-43Vdc at 100Hz – 6 kHz
 - Uscita con simulazione effetto Hall con 2 impulsi/Rev. A 12Vdc
 - Programmabile sino a 36 impulsi/Rev
- > Compatibile con tecnologia BlackBox™
- > Comunicazione seriale
- > Bilanciatura ventilatori eseguita in fabbrica
- > Elettronica sostituibile
- > Programmabile dal cliente
- > Valvola di pressione opzionale
- > Voltaggio: 120 o 240V 50/60Hz impostato in fabbrica
- > Operazione controllo velocità : On/Off, PWM o 0-10V
- > Correzione fattore di potenza attivo per i modelli 7.0 e 10.0
- > UL, CSA, CE



APPLICAZIONI

- > Caldaie
- > Scaldabagno
- > Servizio di ristorazione



EIGENSCHAFTEN

- > Gebläsegehäuse aus Aluminiumguss
- > Rückwärts gekrümmtes Laufrad(anti-spark)
- > Bürstenloser Wechselstrommotor (sinus-gesteuert ohne Sensor)
- > Wartungsfreie, abgedichtete Kugellager
- > Einlassanschlussoptionen für Honeywell, Dungs oder Polidoro
- > Kommunikation -
 - PWM, 5-43Vdc bei 100Hz – 6 kHz
 - Programmierbar bis zu 36 Pulsen / Umdrehung
 - Hall-Signalausgang mit 2 Pulsen / Umdrehung, 12Vdc
- > Kompatibel mit BlakBox™ Technology
- > Serial Communication
- > Alle Gebläse werden werksseitig kalibriert
- > Vergossene, austauschbare Elektronik
- > Kundenprogrammierbar
- > Optionaler Druckanschluss
- > Spannung: 120V oder 240V 50/60Hz (werksseitig voreingestellt)
- > Drehzahlregulierung: An/Aus, PWM oder 0-10V
- > Aktive Blindleistungskompensation für 7.0 and 10.0
- > UL, CSA, CE



ANWENDUNGSGEBIETE

- > Heizkessel
- > Warmwasserbereiter
- > Systemgastronomie



CARACTERISTIQUES

- > Corps du ventilateur en aluminium injecté
- > Turbine anti-étincelles
- > Moteur BLAC, pilotage sinusoïdal sans capteur
- > Roulements étanches
- > Possibilité de monter des entrées d'air Honeywell, Dungs ou Polidoro
- > Communication:
 - signal PWM, 5-43V DC, 100Hz – 6 kHz
 - Simulation de capteur à effet Hall, 2 impulsions par tour, à 12V DC, programmable jusqu'à 36 impulsions par tour.
 - Technologie BlakBox™ (enregistrement des paramètres et temps de fonctionnement)
 - Communication série
- > Tous les ventilateurs sont calibrés en usine.
- > Electronique de contrôle étanche, remplaçable.
- > Programmable par l'installateur.
- > Prise de pression disponible.
- > Tension : 120V ou 240V, 50/60Hz, réglée d'usine.
- > Contrôle de vitesse : Marche / Arrêt, PWM ou signal 0-10V.
- > Correction active de facteur de puissance pour les modèles GPM 7.0 et 10.0.
- > UL, CSA, CE



APPLICATIONS

- > Chaudières
- > Chauffe-eaux
- > Services alimentaires



CARACTERISTICAS

- > Carcasa del soplador de aluminio moldeado
- > Turbina Anti-chispa
- > Motor Brushless de corriente AC manejado sin sensores
- > Baleros sellados
- > Opcion de boquilla de aire con pernos opcional para Honeywell, Dungs o Polidoro
- > Comunicaciones -
 - Comando PWM, 5 - 43Vdc a 100Hz - 6 kHz
 - Salida de Hall effect con 2-pulsos/Rev simulado a 12Vdc
 - Programable hasta 36-pulsos/Rev
- > Tecnología BlakBox™ compatible
- > Comunicación en serie
- > Todos los sopladores calibrados en la fábrica
- > Electronicos reemplazables encapsulados
- > Programable por cliente
- > Grifo de presión opcional
- > Voltaje: 120V o 240V 50/60Hz ajustado en fábrica
- > Velocidad de funcionamiento: encendido / apagado, control de velocidad PWM o 0 -10V
- > PFC Activo Para 7.0 y 10.0
- > UL, CSA, CE



APLICACIONES ESPECIFICAS

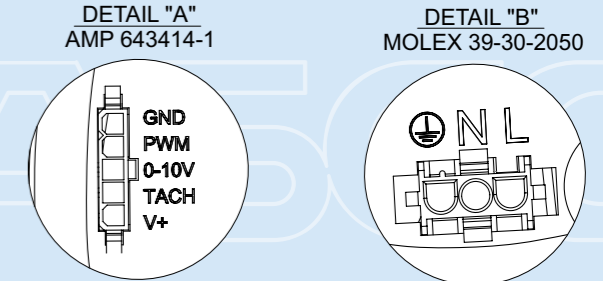
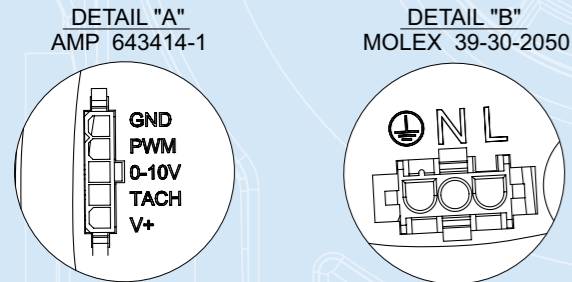
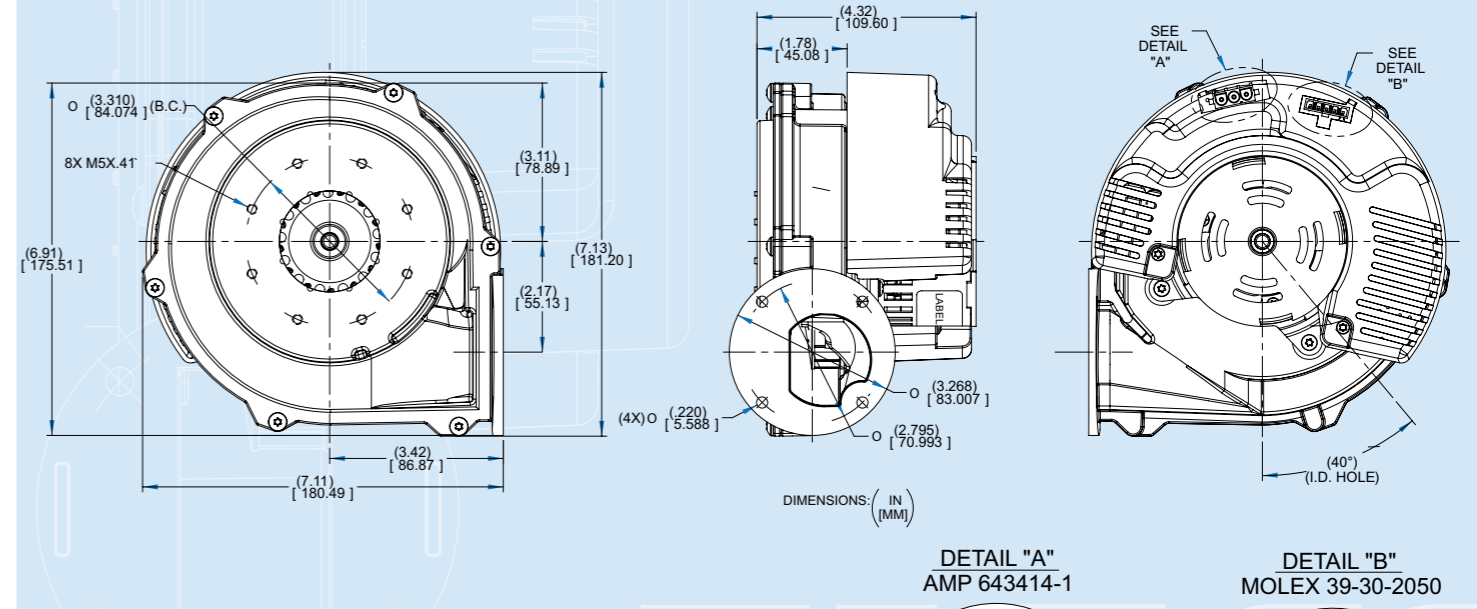
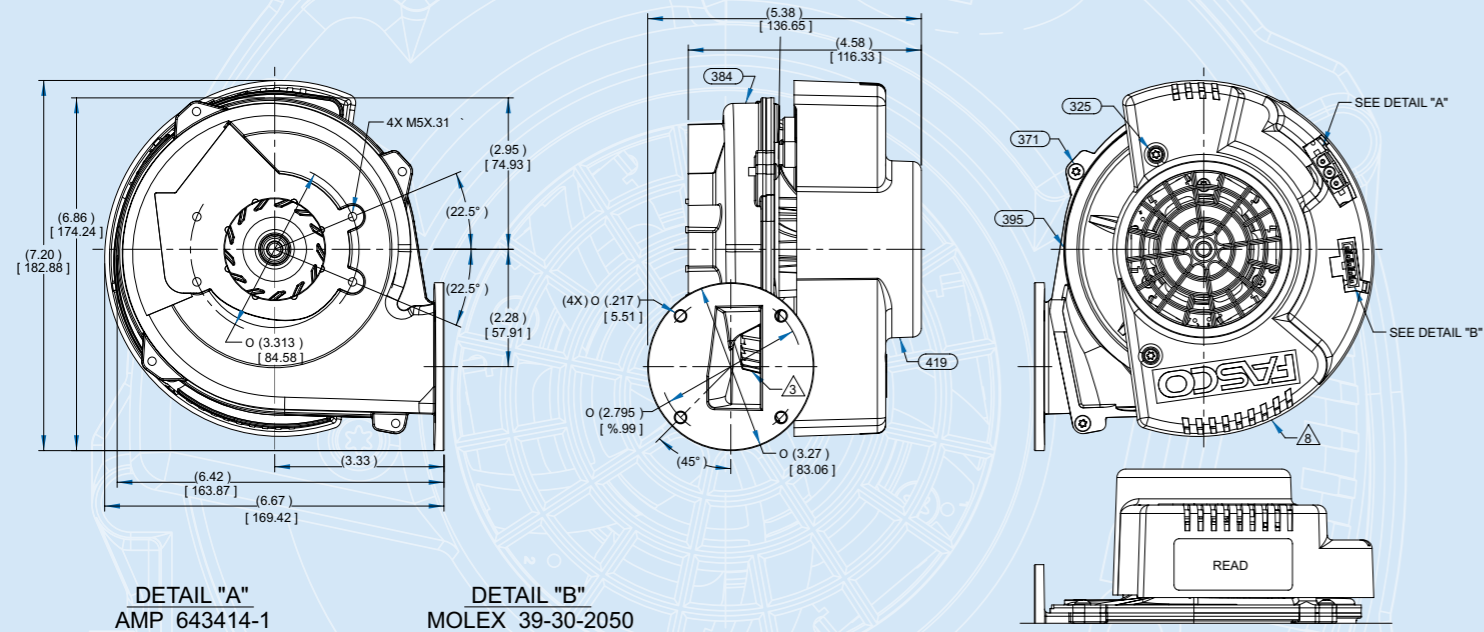
- > Calderas y calentadores
- > Calentadores de Agua
- > Servicio de Comida

A Regal Brand

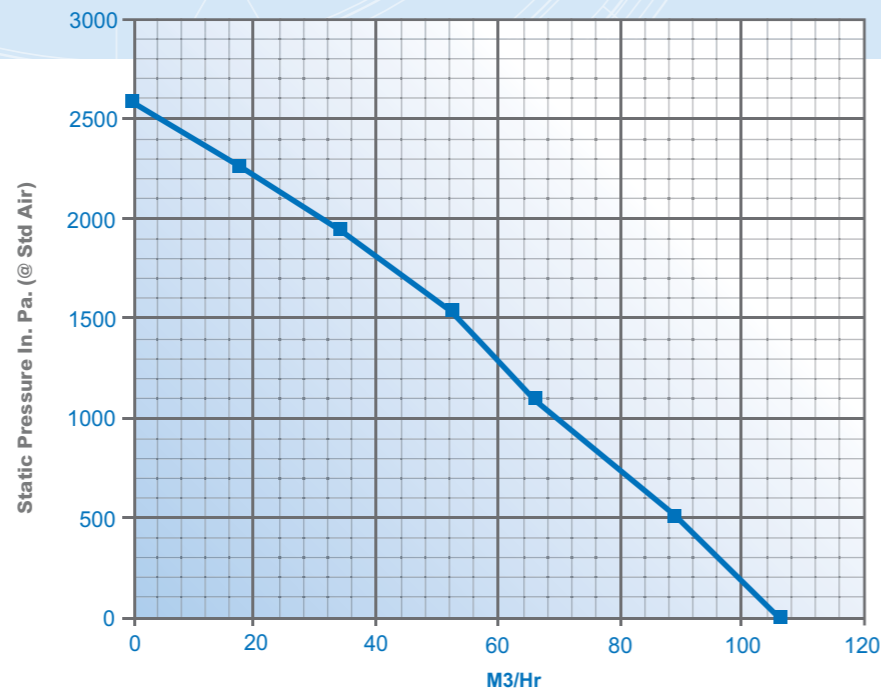
REGAL

4.6 PRE-MIX Combustion Blower

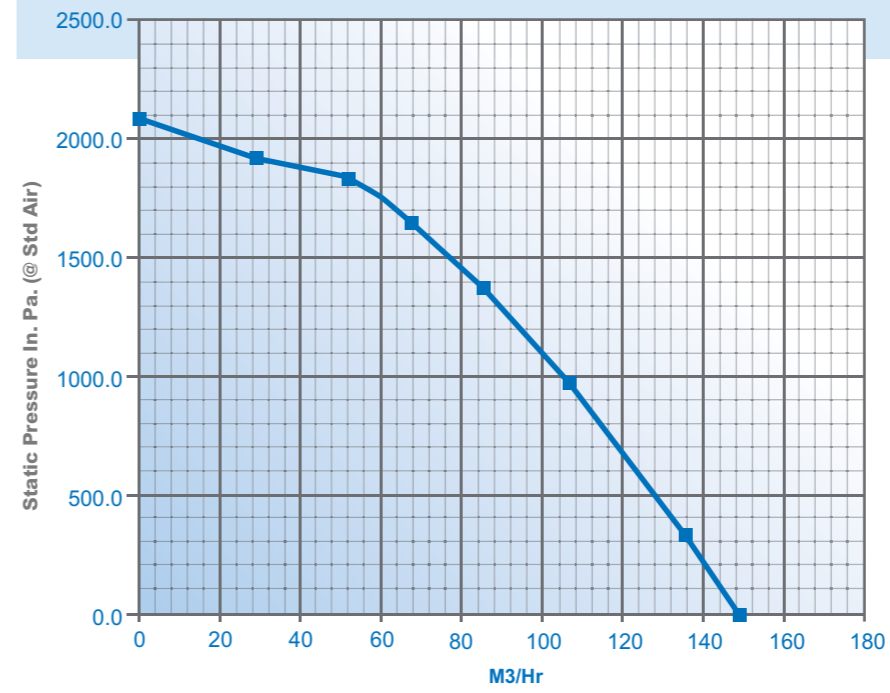
5.0 PRE-MIX Combustion Blower



PERFORMANCE CURVE



PERFORMANCE CURVE

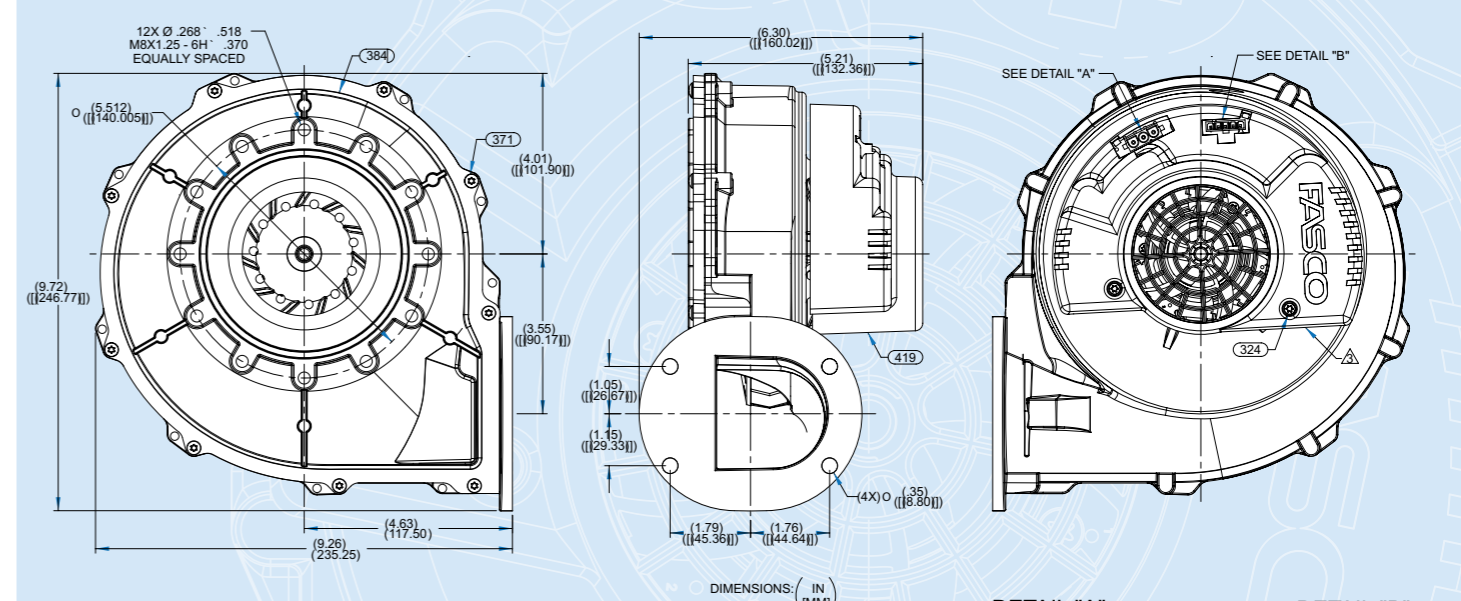
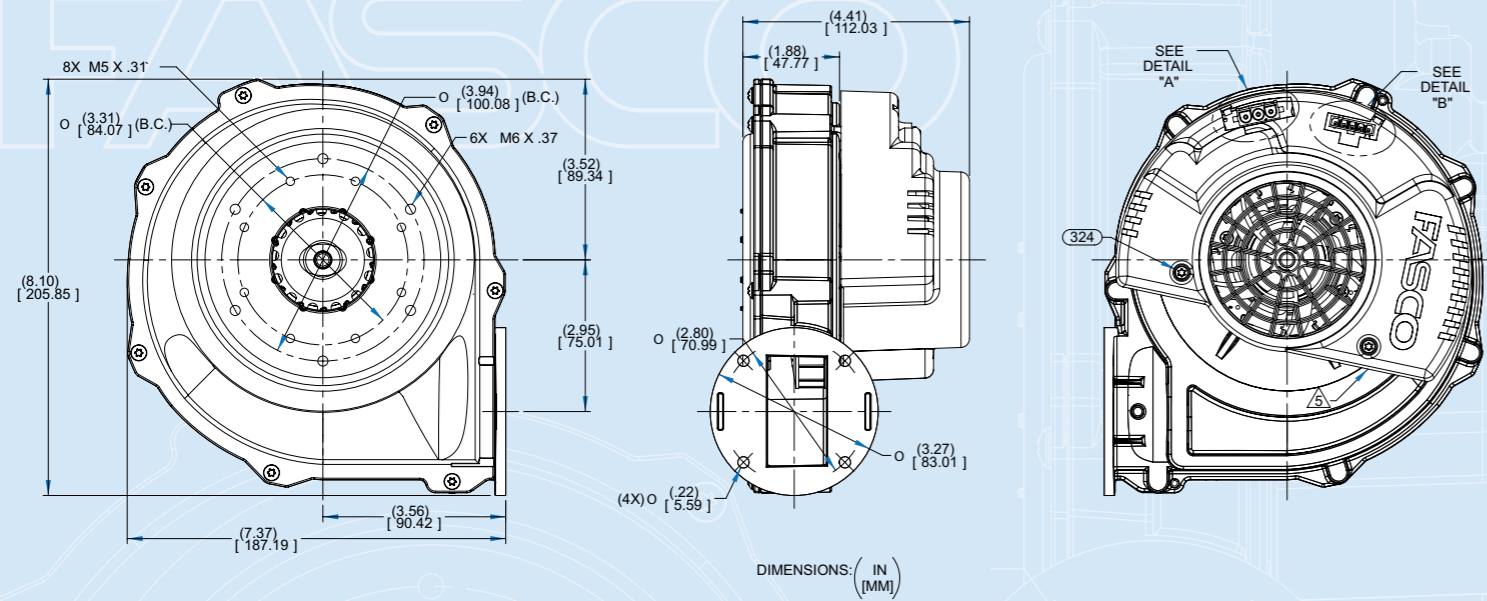


A Regal Brand

REGAL

5.8 PRE-MIX Combustion Blower

6.9 PRE-MIX Combustion Blower

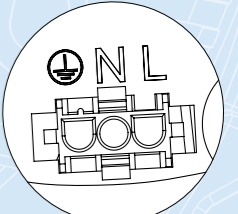
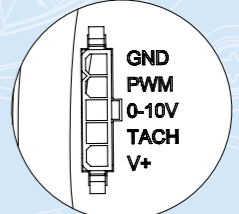
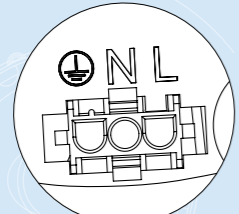
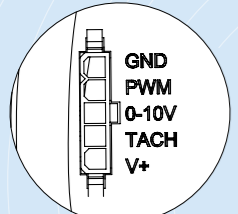


DETAIL "A"
AMP 2029397-1

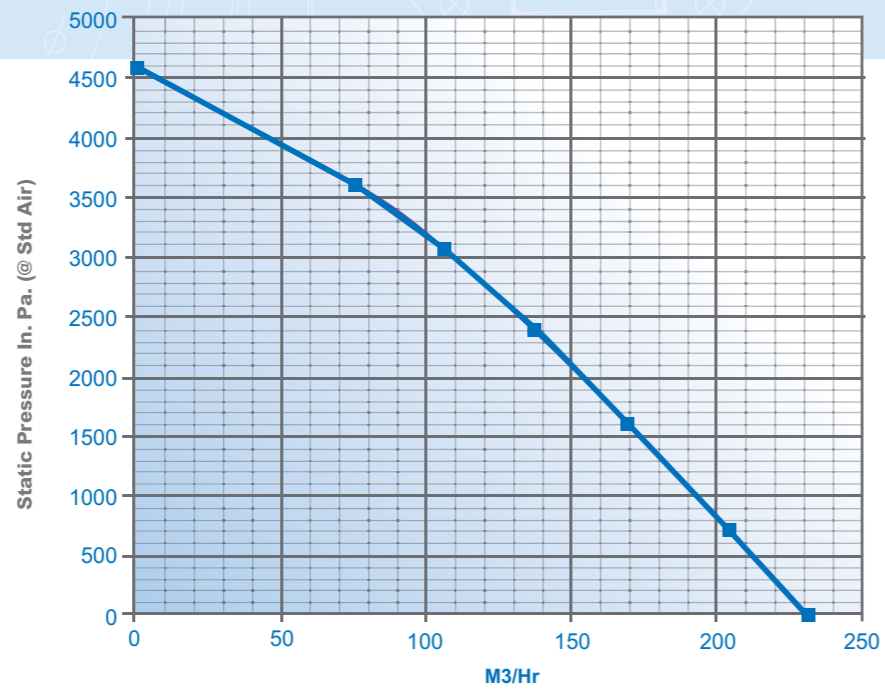
DETAIL "B"
MOLEX 39-30-2050

DETAIL "A"
AMP 2029397-1

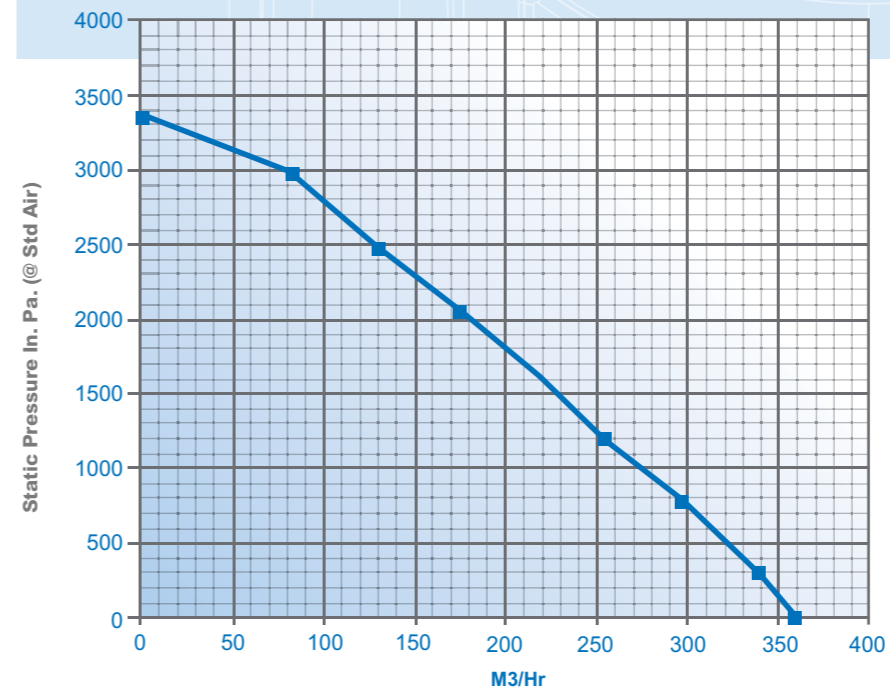
DETAIL "B"
MOLEX 39-30-2050



PERFORMANCE CURVE



PERFORMANCE CURVE

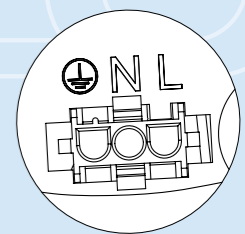
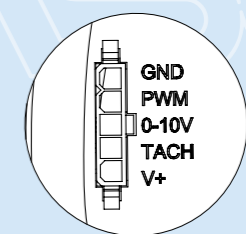
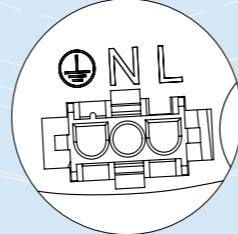
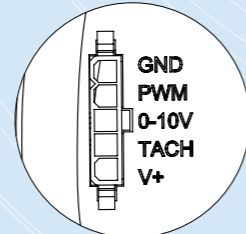
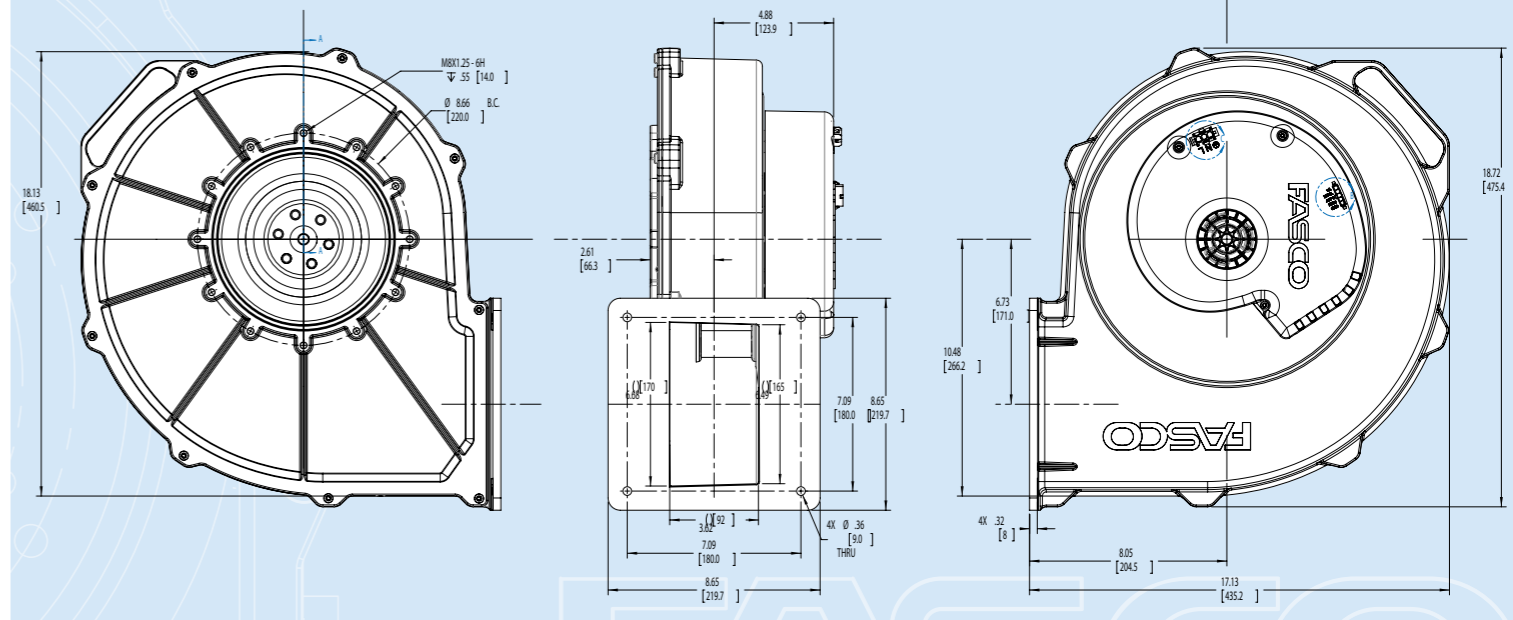
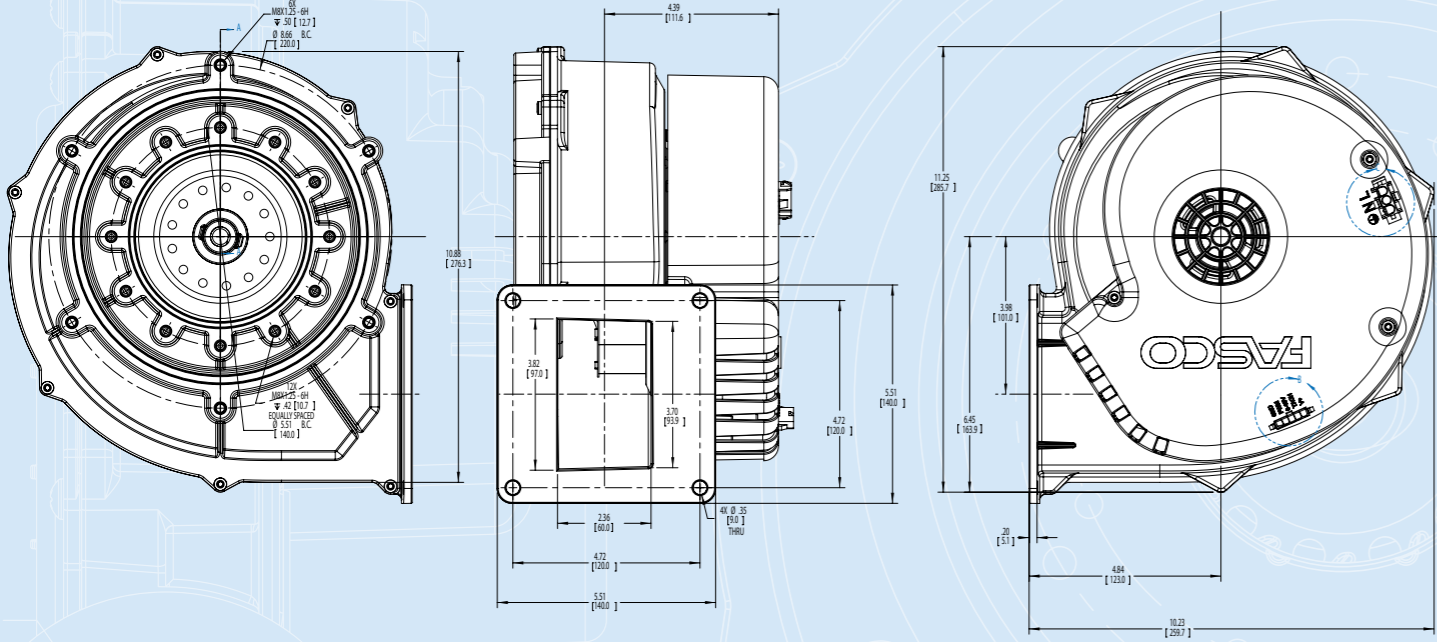


A Regal Brand

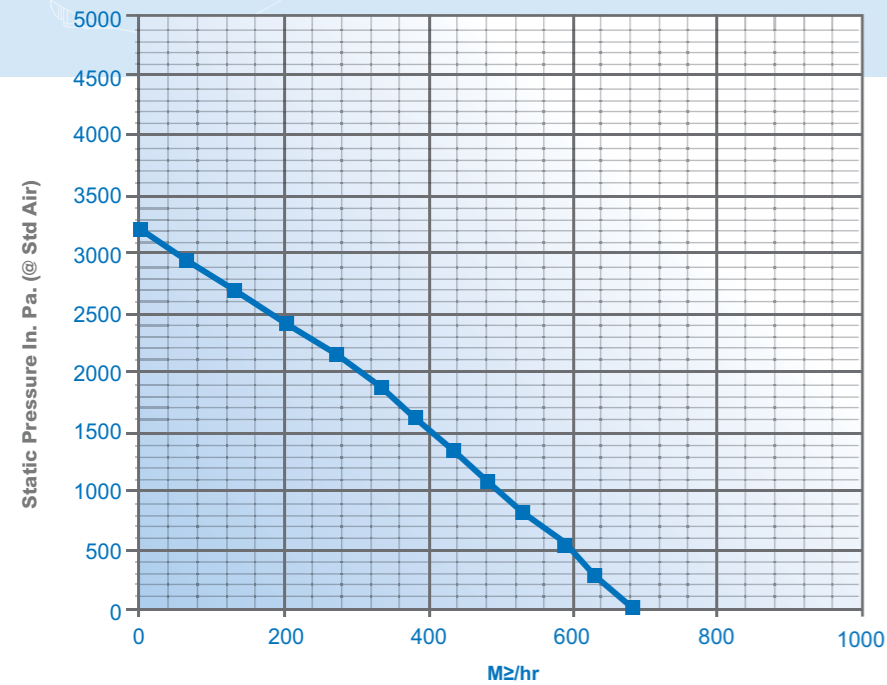
REGAL

7.0 PRE-MIX Combustion Blower

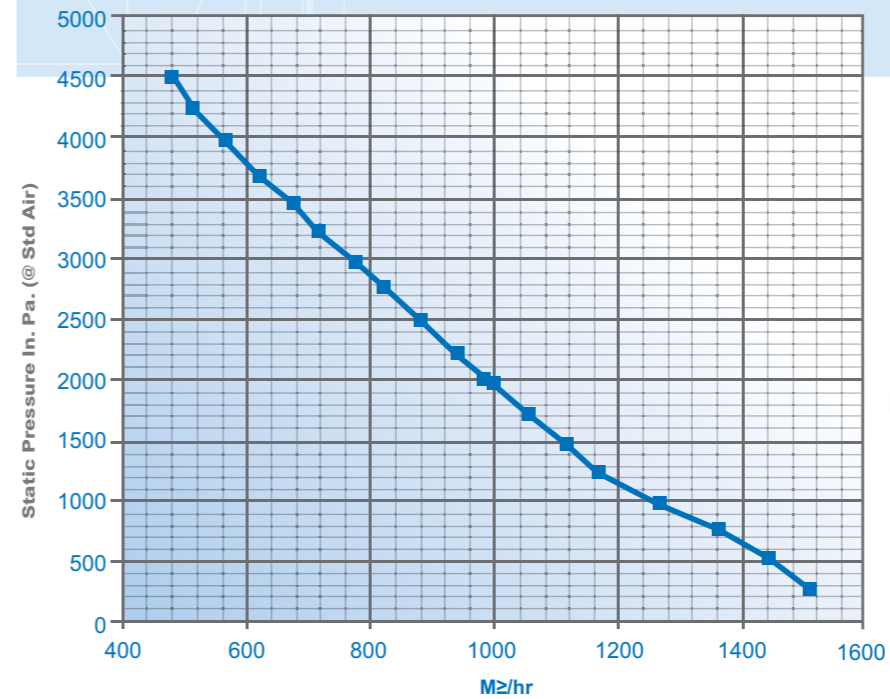
10.0 PRE-MIX Combustion Blower



PERFORMANCE CURVE



PERFORMANCE CURVE



A Regal Brand

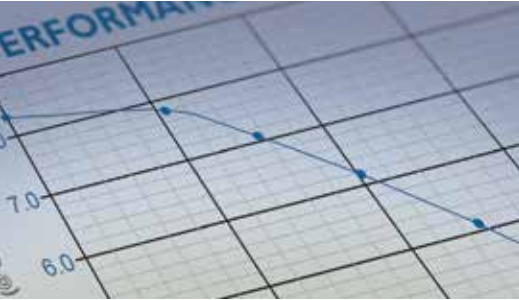
REGAL

FASCO

PRE-MIX BLOWERS



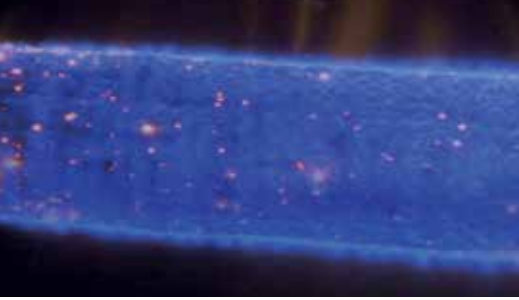
Regal America Inc.
2401 East Sunshine Springfield,
Missouri 65804, USA
Tel: 800-252-1182
www.fasco.com



Regal Manufacturing Ltd.
Marshall Way, Gainsborough
DN21 1XU England
Tel: +441427-614141
www.regalmanufacturing.co.uk



Elco e Trade srl
Via G. Marconi, 1, 20065
Inzago (MI), Italy
Tel: + 39 02 953191
Fax: +39 02 95310138
www.elco-spa.com
info@elco-spa.com



A Regal Brand

REGAL